

JCE系列欧版颚式破碎机

JCE Series Jaw Crusher



结构设计、工作性能、使用寿命、用于粗中碎作业、高端产品

structure design、working performance、service life
suitable for primary and secondary crushing
high-end product of Jaw Crusher

产品简介

Product Introduction

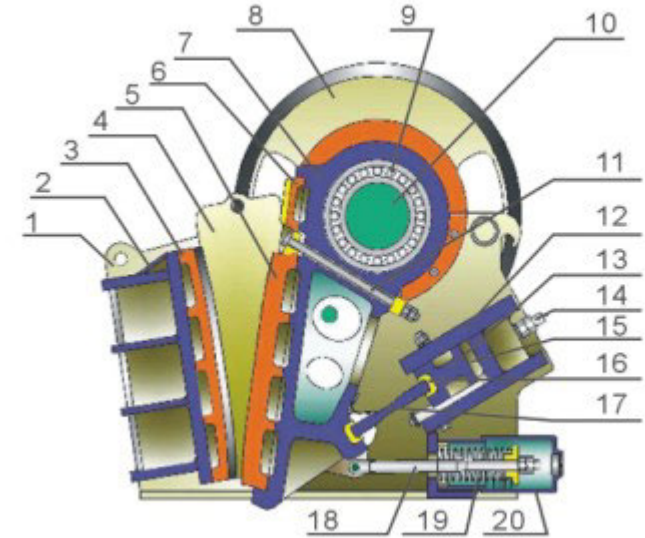
JCE系列欧版颚式破碎机常被用于粗、中碎作业，是颚式破碎机系列中的高端产品。该设备集结了世界上最先进的技术和加工工艺，在结构设计、工作性能、使用寿命、维修频率方面具有其特有的优越性。我公司研发生产的JCE系列欧版颚破已成为了世界上最受青睐的破碎机之一，是坚硬、强腐蚀性物料进行高效破碎时的首选。

JCE series Jaw Crusher is ideally suitable for primary and secondary crushing and has already become the high-end product of Jaw Crusher. This machine absorbs advanced technology in the world and has unique advantages in aspects of structure design, working performance and service life, etc. JCE Jaw Crusher has become the most popular product in the world, which is the first choice to crush hard materials.

主要结构

Main Structure

- 1.侧板
- 2.前箱组件
- 3.定颚板
- 4.侧衬板
- 5.动颚板
- 6.护板
- 7.动颚
- 8.皮带轮
- 9.轴承
- 10.偏心轴
- 11.动颚拉杆螺栓
- 12.机架后箱焊件
- 13.固定高速斜块
- 14.滑块缩进拉杆
- 15.高速滑动斜块
- 16.肘板座
- 17.肘板
- 18.弹簧拉杆
- 19.弹簧
- 20.顶丝座



- 1.Side plate
- 4.Toggle plate
7. Jaw stock
10. Eccentric shaft
- 13.Fixed speed slant lump
- 16.Toggle seat
19. Spring

- 2.Front box module
- 5.Movable jaw
- 8.Pulley
11. Pull rod bolt of the movable jaw
14. The tension rod to tight gliding lump
- 17.Toggle plate
- 20.Top thread bolt socket

3. fixed jaw
6. Cheek plate
- 9.Main bearing
- 12.Frame rear box weldment
15. The lump to gliding speed
18. The tension rob of spring

主要结构 Main Structure

JCE欧版颞式破碎机主要由机架，偏心轴，破碎腔，保险装置，排料口调整装置等部分组成。

JCE series Jaw Crusher are mainly divided into five parts: frame, eccentric shaft, crushing cavity, safety device and discharge opening adjusting device.

1、机架部分：由侧板、前箱组件、后箱焊件等组成。

Frame part is composed of side plate, front box module, frame rear box welding parts, and so on.

2、偏心轴转动部分：主要由动颞、偏心轴、轴承、轴承座、皮带轮等组成,是传递动力的主要部分。

Eccentric shaft part is composed of jaw stock, eccentric shaft, main bearing and pulley, which is the main part of transfer power.

3、破碎腔工作部分：主要由定颞板、动颞板、侧衬板、护板等组成，是破碎物料的工作零件。

Crushing cavity is composed of fixed jaw, movable jaw, toggle plate and cheek plate, etc. They are the working parts for crushing material.

4、保险装置：由肘板、肘板座、弹簧、弹簧拉杆等组成，是破碎机在非正常情况下起保险作用的零件。

Safety device is composed of toggle plate, toggle seat, spring and the tension rod of spring, which plays the role of protecting the machine when the crusher under abnormal circumstance.

5、排料口调整装置：该装置用来调整排料口的大小尺寸，控制出料粒度。主要由调整固定斜块、调整滑动斜块、顶丝螺栓、滑块锁紧拉杆等组成。

Discharge opening adjusting device is used to adjust the size of discharge opening, which is composed of the lump to gilding speed, fixed speed slant lump and the tension rod to tight gilding lump.

性能特点 Features

1.JCE欧版颞破的动颞总成采用更高质量的铸钢件构成，重型偏心轴亦采用锻坯进行加工，使之具有超凡的可靠性；

The movable jaw adopts high quality welding technology, and the eccentric shaft is elaborate;

2.轴承座采用了整体式铸钢结构，这样能够确保与破碎机架完全配合，也大大增强了轴承座的径向强度；

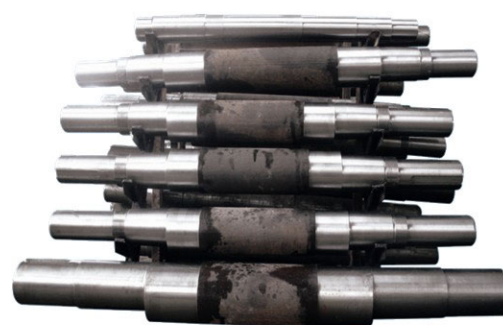
Integral cast steel structure is adopted for bearing seat to ensure the complete matching with the frame.

3.JCE欧版颞破采用较其它同样规格破碎机更大更耐用的偏心轴轴承，使轴承使用寿命延长；

Larger and more wearable main bearing is used to lengthen the service life.

4.在齿形护板的选择上，JCE系列欧版颞破增大了颞板的有效长度，使得产量更高。

A newly designed tooth shaped cheek plate makes the available area of jaw plate longer and enhances the capacity.



产品规格

Specification

型号 Model	JCE1302	JCE1003	JCE1303	JCE604	JCE8106	
进料口尺寸 Opening Size (Mm)	180x1300	250x1000	250x1300	400x600	800x1060	
最大进料尺寸 Max Feeding Size (Mm)	150	220	220	350	680	
排料口调节范围 Discharge Opening Range (Mm)	10-30	20-40	70-100	35-85	75-145	
偏心轴转速 Shaft Speed (Rpm)	320	330	290	250	180	
处理能力 Capacity (T/H)	12-35	15-50	26-85	15-70	120-350	
电动机 motor	型号 Model	Y225M-6	Y225M-6	Y250M-6/ Y280S-6	Y225M-6	Y225M-6
	功率 Power (Kw)	30	30	37/45	37/45	90/110
	转速 Speed (Rpm)	980	980	980	980	980
外形尺寸 Dimension (Mm)	1320x2150x 1175	1400x1850x 1310	1450x2150x 1175	1920x1460x 1840	2685x2205x 2380	

This series Jaw Crusher is widely used in mining, construction, metallurgical and chemical industries. The largest compression resistance of the material to be crushed is 280MPa, and the largest block of material to be crushed shall not be greater than required

产品图片

Product picture



适用范围

Application Range

该系列颞式破碎机主要用于冶金、矿山、化工、水泥、建筑、耐火材料及陶瓷等工业部门作中碎和细碎各种中硬矿石和岩石等。该系列破碎机最适宜于破碎抗压强度低于280Mpa的矿石、岩石、矿渣等，被破碎物料的最大块度不得大于技术参数表所规定。

现场图片
Pictures on Site



企业介绍
Enterprise Introduction

上海山启机械制造有限公司是中国知名的破碎筛分设备制造商。我们为客户提供全系列破碎筛分设备，包括圆锥破碎机颚式破碎机、反击式破碎机、立轴冲击破碎机(制砂机)、移动式破碎站和振动筛，我们不仅为客户提供高性价比的产品，还提供一流的服务支持及解决方案。我们的破碎设备在大量的基础建设工程中得到应用，另外,成套设备已出口到俄罗斯、蒙古、中亚、非洲等国家和地区。

公司拥有多名国内破碎筛分的专家，具有强大的新产品研发能力。公司非常重视国际技术交流与合作，先后引进了美国、德国、澳大利亚等国家的先进技术和工艺，拥有生产设备百余台套。时刻关注新产品、新技术的研发，并成立了砂石机器和选矿设备的研究室。



■ ■ 企业介绍
■ ■ Enterprise Introduction

山启机械 ■ ■
Shunky Machinery ■ ■

Shanghai Shunky Machinery Co. Ltd is a famous manufacturer of crushing and screening equipments in China. We provide our customers complete crushing plant, including cone crusher, jaw crusher, impact crusher, VSI sand making machine, mobile crusher and vibrating screen. What we provide is not just the high value-added products, but also the first class service team and problems solution suggestions. Our crushers are widely used in the fundamental construction projects. The complete crushing plants are exported to Russia, Mongolia, middle Asia, Africa and other regions around the world.

We have many crusher experts who are capable of new products searching and developing. We pay high attention on the international communication and cooperation and introduced advanced technology from Germany, America and Australia these years. We also have built research room in our company.



专业精神打造臻品·山启机械引领全球

PRODUCE PERFECT PRODUCTS SHUNKY MACHINERY TAKES THE LEAD IN THE WORLD